

Chicago Technical Sheet



Chicago Tobacco linen, Interior Design by Kitesgrove

Composition	100% Linen
Width	52" / 132CM
Pattern Repeat	Horizontal Repeat 4.3" / 11 CM Vertical Repeat 8.4" / 21.3CM
Martindale	20,000 Rubs
Roll Length	Max size 50M / 45 yard rolls (sold by linear metre / yard)
Weight	360 g/m ²
Minimum order	1M / 3 Yards
Fabric Maintenance	Weekly light vacuuming is desirable to remove dirt and dust particles and greatly extends the life of the fabric. Most of our prints have good resistance to being dry-cleaned in Perchloroethylene, but a spot test is recommended to ascertain temperature and purity values beforehand. Custom print on performance polyester for a more washable product.
Fabric FR Rating	All printed linens are supplied untreated and untested. Fabrics made of at least 75% natural fibres can be Cigarette tested upon request to comply with Domestic Upholstery regulations when covered with a barrier cloth (schedule 3 interliner)
Commodity Code	5309111000
Country of Origin	UK

Inquire for custom projects No minimum order on standard wallpaper, vinyl, linen, cotton or Trevira.

Custom lead time 2-3 weeks sampling, 4-8 weeks production from receipt of 50% deposit.

Inquire for contract projects 40 Metre minimums for Performance Polyester FR, 100 Metre minimums for ASTM Vinyl.

Contract lead time 6-8 weeks sampling, 8-10 weeks production from receipt of 50% deposit and confirmed order.

Chicago Technical Sheet

Custom Submittal Form

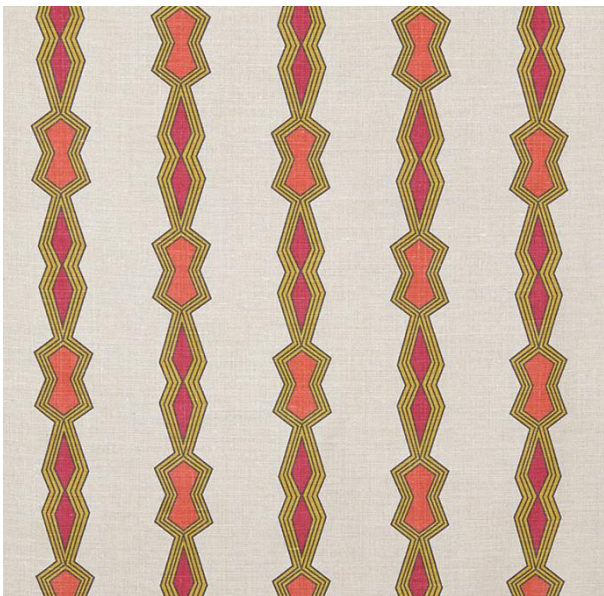
We thrive on creative conversations and love to be challenged, this combined with our intimate knowledge of colour, printing and weaving allows us to tackle almost any customisation project. With simple instruction on colour we can adapt the palette of a design to match any interior scheme.

Colours

We can easily alter the colours of our prints to adapt them for a particular scheme. We require guidance on colour from any source, such as fabric cutting, pantone or paint swatch references.

Base Qualities

We can alter the composition of our fabrics to make them more suitable for a given use. Whether we are printing onto a more durable ground for upholstery, Trevira or vinyl for flame retardancy, polyester for outdoor use, we apply the same care and attention.



Chicago Design

THIS FORM MUST BE SUBMITTED WITH HARD COLOUR REFERENCES TO YOUR SHOWROOM WHO WILL PROVIDE A FORMAL QUOTE BASED ON INFORMATION PROVIDED.

● *Colour 1*

● *Colour 2*

● *Colour 3*

● *Colour 4*

Ground Colour

Print to standard

Client to submit

Design Notes (*scale change / motif adjustments*)

Quantity Required

Ground Options (please tick box that applies)

<input type="checkbox"/>	Non-Woven Wallpaper (White or Ivory)	<input type="checkbox"/>	Raffia Wallpaper (50 M/YD Minimums apply)	
<input type="checkbox"/>	Vinyl Wallpaper (Flat or Linen Emboss)	<input type="checkbox"/>	Cotton (several options available)	
<input type="checkbox"/>	Trevira Polyester FR (several options available)	<input type="checkbox"/>	Outdoor Performance Polyester FR (40 M/YD Minimums apply)	
<input type="checkbox"/>	Light Linen (Ecrú or Natural)	<input type="checkbox"/>		Other - please specify:
<input type="checkbox"/>	Heavy Linen (Ecrú or Natural)			

Custom print on contract vinyl to meet EN 13501 B-s2, d0 + ASTM E84 Class A standards.
 Custom print on Performance Polyester FR to meet class 1 anti-flame according to UNI 9176, B1 in Germany and M1 in France, NFPA 701-10, NFPA 260 and UFAC in Class 1.