


Bulu Performance Print Technical Sheet

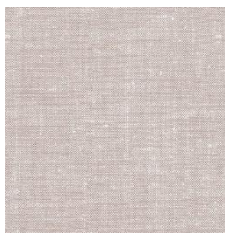
Description	A selection of our signature colours, digitally printed on high performance Polyester suitable for Indoor / Outdoor use.
Composition	100% Polyester FR
Width	53" / 135 CM
Pattern Repeat	Horizontal Repeat 53" / 135 CM Vertical Repeat 45.6" / 116CM (Straight Match)
Martindale	40,000 Rubs
Roll Length	Max size 40M / 43 Yard rolls (sold by linear metre / yard)
Minimum order	1M / 3 Yards
Weight	250 g/m2
Maintenance	Machine washable at 30 degrees. Do not twist or wring. Do not steam iron. Iron on reverse only. 
Finishing	Soil-resistant, mould resistant, oil and water-repellent with Teflon Finish.
UK FR Classification	BS5852:1979 Part 1 Pass, BS EN 1021-1-2:2006 Pass
USA FR Classification	NFPA 701-10 Pass, NFPA 260/UFAC Class 1
Europe FR Classification	EN 13773 Class 1
French FR Classification	NF P 92-503 504 505 (M1)
Italian FR Classification	UNI 9177 Classe Uno
Country of Origin	Italy
Commodity Code	55121910

Inquire for custom projects No minimum order on standard wallpaper, vinyl, linen, cotton or Trevira.

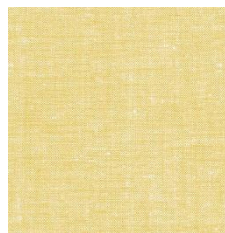
Custom lead time 2-3 weeks sampling, 4-8 weeks production from receipt of 50% deposit.

Inquire for contract projects 40 Metre minimums for Performance Polyester FR, 100 Metre minimums for ASTM Vinyl.

Contract lead time 6-8 weeks sampling, 8-10 weeks production from receipt of 50% deposit and confirmed order.



LATTE



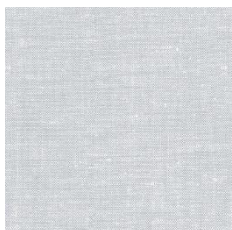
LIMONE



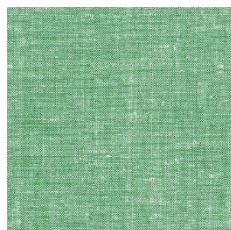
ARANCIO



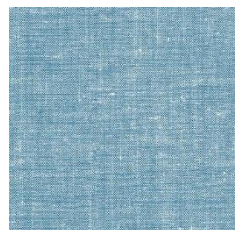
ROSA



CELESTE



PRATO



BLUE

Bulu Performance Print Technical Sheet

Custom Submittal Form

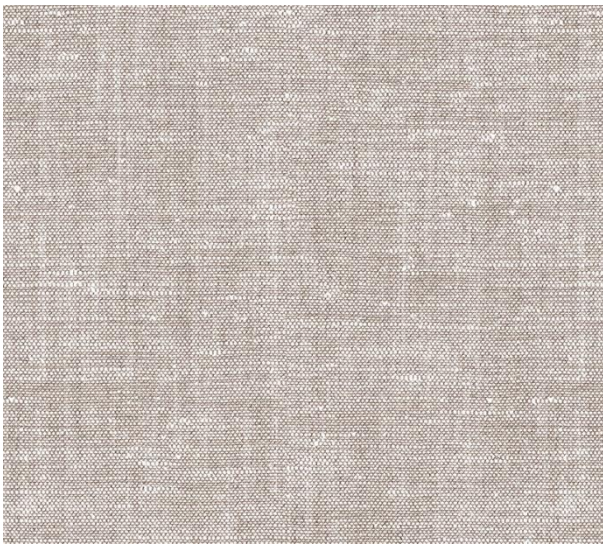
We thrive on creative conversations and love to be challenged, this combined with our intimate knowledge of colour, printing and weaving allows us to tackle almost any customisation project. With simple instruction on colour we can adapt the palette of a design to match any interior scheme.

Colours

We can easily alter the colours of our prints to adapt them for a particular scheme. We require guidance on colour from any source, such as fabric cutting, pantone or paint swatch references.

Base Qualities

We can alter the composition of our fabrics to make them more suitable for a given use. Whether we are printing onto a more durable ground for upholstery, Trevira or vinyl for flame retardancy, polyester for outdoor use, we apply the same care and attention.



Bulu Design

THIS FORM MUST BE SUBMITTED WITH HARD COLOUR REFERENCES TO YOUR SHOWROOM WHO WILL PROVIDE A FORMAL QUOTE BASED ON INFORMATION PROVIDED.

● *Colour 1*

Design Notes (*scale change / motif adjustments*)

Quantity Required

Ground Options (please tick box that applies)

<input type="checkbox"/>	Non-Woven Wallpaper (White or Ivory)	<input type="checkbox"/>	Raffia Wallpaper (50 M/YD Minimums apply)
<input type="checkbox"/>	Vinyl Wallpaper (Flat or Linen Emboss)	<input type="checkbox"/>	Cotton (several options available)
<input type="checkbox"/>	Trevira Polyester FR (several options available)	<input type="checkbox"/>	Outdoor Performance Polyester FR (40 M/YD Minimums apply)
<input type="checkbox"/>	Light Linen (Ecru or Natural)	<input type="checkbox"/>	Other - please specify:
<input type="checkbox"/>	Heavy Linen (Ecru or Natural)		

Custom print on contract vinyl to meet EN 13501 B-s2, d0 + ASTM E84 Class A standards.
Custom print on Performance Polyester FR to meet class 1 anti-flame according to UNI 9176, B1 in Germany and MI in France, NFPA 701-10, NFPA 260 and UFAC in Class 1.