

*Gozo Technical Sheet*



*Gozo Cobalt Raffia wallpaper, Interiors by Melissa Jane Interiors*

<b>Composition</b>	100% Raffia on Non-woven
<b>Width</b>	34.3" / 87CM
<b>Pattern Repeat</b>	Horizontal Repeat 34.3" / 87CM Vertical Repeat 49.2" / 125CM (Straight Match)
<b>Roll Length</b>	Max size 30M / 32 yard rolls (sold by linear metre / yard)
<b>Weight</b>	297 g/m <sup>2</sup>
<b>Minimum order</b>	1M / 3 Yards
<b>Wallpaper Maintenance</b>	Brush raffia wallpaper with dry brittle brush to remove dirt. Custom print on vinyl for a more washable product.
<b>Fire Rating</b>	EN 13501-1:2002 Class B, s1, d0 / ASTM E84 Class A
<b>Commodity Code</b>	48021000
<b>Country of Origin</b>	Italy

**Inquire for custom projects** No minimum order on standard wallpaper, vinyl, linen, cotton or Trevira.

**Custom lead time** 2-3 weeks sampling, 4-8 weeks production from receipt of 50% deposit.

**Inquire for contract projects** 40 Metre minimums for Performance Polyester FR, 100 Metre minimums for ASTM Vinyl.

**Contract lead time** 6-8 weeks sampling, 8-10 weeks production from receipt of 50% deposit and confirmed order.

*Gozo Technical Sheet*

**Custom Submittal Form**

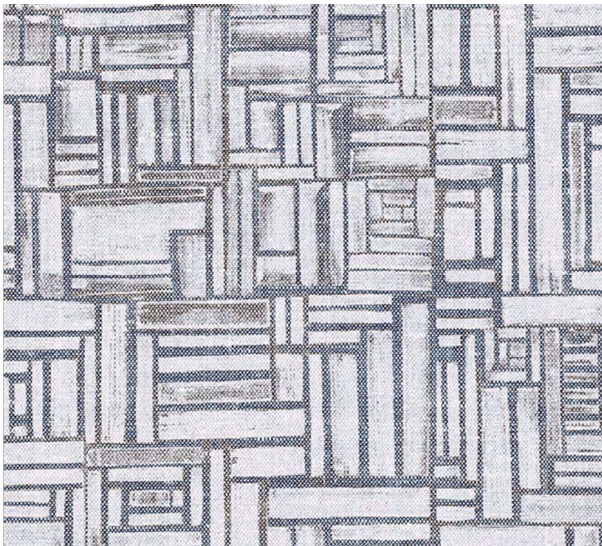
We thrive on creative conversations and love to be challenged, this combined with our intimate knowledge of colour, printing and weaving allows us to tackle almost any customisation project. With simple instruction on colour we can adapt the palette of a design to match any interior scheme.

**Colours**

We can easily alter the colours of our prints to adapt them for a particular scheme. We require guidance on colour from any source, such as fabric cutting, pantone or paint swatch references.

**Base Qualities**

We can alter the composition of our fabrics to make them more suitable for a given use. Whether we are printing onto a more durable ground for upholstery, Trevira or vinyl for flame retardancy, polyester for outdoor use, we apply the same care and attention.



**Gozo Design**

THIS FORM MUST BE SUBMITTED WITH HARD COLOUR REFERENCES TO YOUR SHOWROOM WHO WILL PROVIDE A FORMAL QUOTE BASED ON INFORMATION PROVIDED.

*Colour 1*

*Colour 2*

*Design Notes (scale change / motif adjustments)* .....

*Quantity Required* .....

*Ground Options (please tick box that applies)*

<input type="checkbox"/>	Non-Woven Wallpaper (White or Ivory)	<input type="checkbox"/>	Raffia Wallpaper (50 M/YD Minimums apply)
<input type="checkbox"/>	Vinyl Wallpaper (Flat or Linen Emboss)	<input type="checkbox"/>	Cotton (several options available)
<input type="checkbox"/>	Trevira Polyester FR (several options available)	<input type="checkbox"/>	Outdoor Performance Polyester FR (40 M/YD Minimums apply)
<input type="checkbox"/>	Light Linen (Ecru or Natural)	<input type="checkbox"/>	Other - please specify:
<input type="checkbox"/>	Heavy Linen (Ecru or Natural)	<input type="checkbox"/>	

Custom print on contract vinyl to meet EN 13501 B-s2, d0 + ASTM E84 Class A standards.  
 Custom print on Performance Polyester FR to meet class 1 anti-flame according to UNI 9176, B1 in Germany and M1 in France, NFPA 701-10, NFPA 260 and UFAC in Class 1.

*Gozo Technical Sheet*

**IMPORTANT HANGING INFORMATION**

Before you start please ensure the following:

- The wallcoverings are as ordered - as specified, as labelled (identification samples available immediately)
- You have sufficient material to complete the job in the same batch
- Batch numbers are identical - never mix batches on the wall, never in fill with off-cuts
- The correct adhesive for your individual site circumstances
- Adequate site conditions – good lighting for correct inspection, minimum ambient temperature of 10°C. Good ventilation & clean working conditions.
- Avoid excessive ambient temperatures – radiators should ideally be removed before and for the 24 hours after hanging. If this is not possible, they must be turned off and kept off until the wallcovering has fully dried.
- Please trial hang a wallpaper sample 24 hours prior to full hang.

N.B Joints on some designs such as woven textiles, grass cloths and other horizontal patterns will be visible and may give a panelled effect.

Please ensure you carry out a trial hang on a sample of paper 24 hours prior to hanging your full order. No claims will be accepted for hanging charges or for consequential loss. Continue inspection throughout hanging process, inspecting each drop as you hang it. Never assume shading will dry out.

**SURFACE PREPARATION**

Correct identification of surfaces, and the appropriate preparation is critical to successful hanging. All surfaces should be:

- **Clean** – Remove all surface contamination, e.g dirt, grease and pigmented marks, eg felt pen etc. Wash off using a detergent solution, rinse and allow to dry thoroughly.
- **Sound & Even** – Free of flaking paint, old wallpaper/backing. Evidence of previous adhesive should be removed with hot water. Weak skims/ surfaces and uneven surfaces will require remedial action.
- **Uniform in Colour** – To prevent show through equalise colour.
- **Dry in Depth** – Tested with good moisture meter.
- **Keyed** – With coarse, dry sandpaper.
- **Lining Paper** – We recommend the use of lining paper.

**HANGING THE WALLCOVERINGS**

PRODUCT	RECOMMENDED ADHESIVES	APPLY ADHESIVE TO	DIRECTION OF DROPS	METHOD OF JOINT
Grass Cloth on Non-woven wallpaper	Good quality heavy weight ready mix adhesive such as Beeline Heavy Grade	Paste the Wall <b>(We recommend the use of lining paper)</b>	As directed on roll	Butt Join

This information is supplied in good faith, but without guarantee and on the understanding that the installer will have decorating knowledge to work with differing site or atmospheric conditions. A sample hang must be carried out 24 hours prior to full hang.