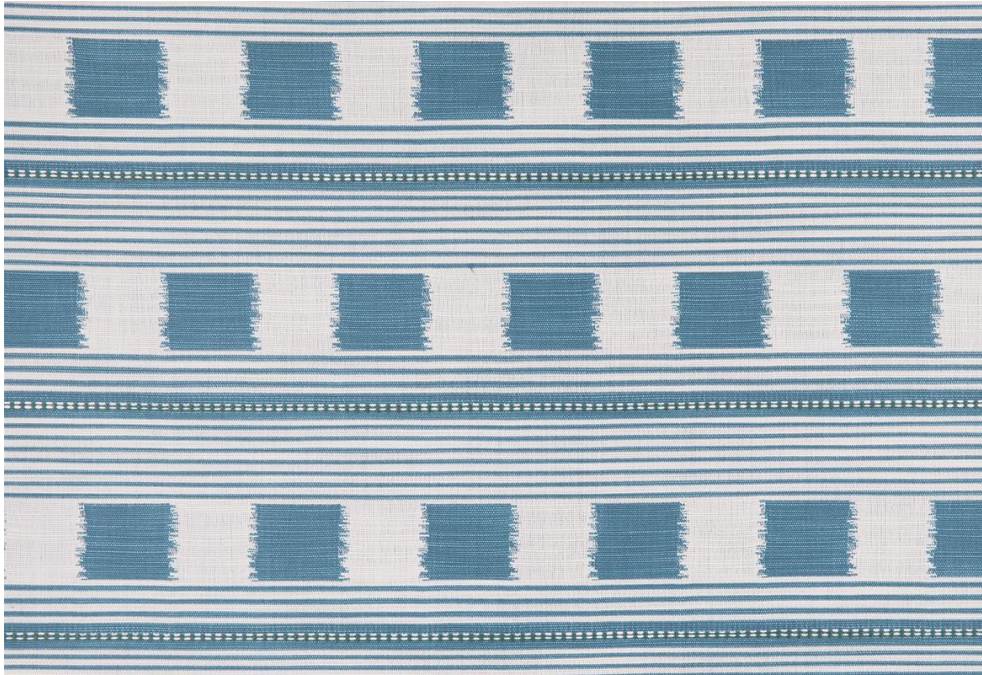


*Lost and Found Perennials Technical Sheet*



*Lost and Found Turchese Outdoor Fabric*

<b>Composition</b>	100% Solution Dyed Acrylic
<b>Width</b>	54" / 137 CM
<b>Pattern Repeat</b>	Horizontal Repeat 3.5" / 8.9 CM Vertical repeat 9.4" / 23.8 CM (Straight Match)
<b>Martindale</b>	25,000 Rubs
<b>Roll Length</b>	Max size 30M rolls (sold by linear metre)
<b>Minimum order</b>	1 Metre
<b>FR Rating</b>	Supplied untreated and untested (Our treatment centre recommends the following to pass UK Domestic Upholstery standards or Contract Crib 5: APNTREAT double treatment of FR Backcoating + FR lamination)
<b>Maintenance</b>	We recommend cleaning Perennials Luxury Performance Fabrics with natural soap in lukewarm water. Cleaners such as Dawn, Formula 409 or OxiClean have also been used with success. Sponge briskly and rinse thoroughly with clean water to remove dirt. Air dry. Chlorine bleach will not affect the coloration of the solution-dyed fibre and is therefore acceptable for stubborn stain removal, including mildew. We suggest a diluted solution of one part bleach and two parts water. Thorough rinsing is essential. Professional dry cleaning (any solvent except Trichloroethylene; low heat) is always recommended for tough stains.
<b>Weight</b>	491 gm2
<b>Commodity Code</b>	5515290000
<b>Country of Origin</b>	Mexico

Lost and Found Perennials Technical Sheet

**The Mess**

**The Cure**

BARBEQUE SAUCE (we are based in Texas after all!)	Sponge briskly with a 1:20 solution of dishwashing liquid to water; rinse thoroughly. For stubborn stain removal, follow up with formula 409, <sup>®</sup> OxiClean™ or a bleach solution as needed. Rinse thoroughly.
BEER (can, bottle or tap)	Sponge briskly with a 1:20 solution of dishwashing liquid to water; rinse thoroughly
BERRIES (fresh, jam or juice)	Sponge briskly with a 1:20 solution of dishwashing liquid to water; rinse thoroughly. For stubborn stain removal, follow up with Formula 409, <sup>®</sup> OxiClean™ or a bleach solution as needed. Rinse thoroughly.
BIRD DOO-DOO	Sponge briskly with a 1:20 solution of dishwashing liquid to water; rinse thoroughly. For stubborn stain removal, follow up with Formula 409, <sup>®</sup> OxiClean™ or a bleach solution as needed. Rinse thoroughly.
BUTTER	Sponge briskly with a 1:20 solution of dishwashing liquid to water; rinse thoroughly. For stubborn stain removal, follow up with Formula 409, <sup>®</sup> or OxiClean™ as needed. Rinse thoroughly.
CHOCOLATE...MMMMM	Sponge briskly with a 1:20 solution of dishwashing liquid to water; rinse thoroughly.
COFFEE	Sponge briskly with a 1:20 solution of dishwashing liquid to water; rinse thoroughly.
COLA	Sponge briskly with a 1:20 solution of dishwashing liquid to water; rinse thoroughly.
CRAYON (darn kids)	Sponge briskly with a 1:20 solution of dishwashing liquid to water; rinse thoroughly.
INK (permanent marker, india, ballpoint or tattoo)	Sponge briskly with a 1:20 solution of dishwashing liquid to water; rinse thoroughly. For stubborn stain removal, follow up with Formula 409, <sup>®</sup> OxiClean™ or a bleach solution as needed. Rinse thoroughly.
KETCHUP OR MUSTARD (or the combined mustchup)	Sponge briskly with a 1:20 solution of dishwashing liquid to water; rinse thoroughly. For stubborn stain removal, follow up with Formula 409, <sup>®</sup> or OxiClean™ as needed. Rinse thoroughly.
LIPSTICK / COSMETICS	Sponge briskly with a 1:20 solution of dishwashing liquid to water; rinse thoroughly. For stubborn stain removal, follow up with Formula 409, <sup>®</sup> OxiClean™ or a bleach solution as needed. Rinse thoroughly.
MILDEW	Soak in a 1:20 solution of bleach to water until stains are removed. Then wash with a 1:20 solution of dishwashing liquid to water. Rinse thoroughly.
OIL	Sponge briskly with a 1:20 solution of dishwashing liquid to water; rinse thoroughly. For stubborn stain removal, follow up with Formula 409, <sup>®</sup> or OxiClean™ as needed. Rinse thoroughly.
RUST	Saturate with lemon juice. Cover with salt. Allow to sit for 24 hours, refreshing lemon juice as needed. Rinse and repeat as needed. Then wash with a 1:20 solution of dishwashing liquid to water. Rinse thoroughly. DO NOT BLEACH!
SHOE POLISH	Sponge briskly with a 1:20 solution of dishwashing liquid to water; rinse thoroughly. For stubborn stain removal, follow up with Formula 409, <sup>®</sup> OxiClean™ or a bleach solution as needed. Rinse thoroughly.
SUNTAN LOTION (even spf 300)	Sponge briskly with a 1:20 solution of dishwashing liquid to water; rinse thoroughly. For stubborn stain removal, follow up with Formula 409, <sup>®</sup> or OxiClean™ as needed. Rinse thoroughly.
TEA (green, white, black or other)	Sponge briskly with a 1:20 solution of dishwashing liquid to water; rinse thoroughly
TOMATO JUICE OR MARINARA	Sponge briskly with a 1:20 solution of dishwashing liquid to water; rinse thoroughly. For stubborn stain removal, follow up with Formula 409, <sup>®</sup> or OxiClean™ as needed. Rinse thoroughly.
TREE SAP	Sponge briskly with a 1:20 solution of dishwashing liquid to water; rinse thoroughly. For stubborn stain removal, follow up with Formula 409, <sup>®</sup> OxiClean™ or a bleach solution as needed. Rinse thoroughly.
WAX (candle)	Allow wax to harden. Peel off as much as possible. Cover with paper towel and iron with low heat, moving paper towel as needed to absorb excess wax. Wash with a 1:20 solution of dishwashing liquid to water. Rinse thoroughly.
WINE	Sponge briskly with a 1:20 solution of dishwashing liquid to water; rinse thoroughly. For stubborn stain removal, follow up with Formula 409, <sup>®</sup> OxiClean™ or a bleach solution as needed. Rinse thoroughly.