


*Travelling Light Performance Print Technical Sheet*

<b>Description</b>	Kit Kemp's design work is all about colour and detailed storytelling which celebrates the craft and captures the imagination. Travelling Light is inspired by an embroidered textile Kit found on her travels. Digitally printed on high performance Polyester suitable for Indoor / Outdoor use.
<b>Composition</b>	100% Polyester FR
<b>Width</b>	51.6" / 131 CM
<b>Pattern Repeat</b>	Horizontal Repeat 51.6" / 131 CM Vertical Repeat 31.6" / 80.2CM (Straight Match)
<b>Martindale</b>	40,000 Rubs
<b>Roll Length</b>	Max size 40M / 43 Yard rolls (sold by linear metre / yard)
<b>Minimum order</b>	1M / 3 Yards
<b>Weight</b>	250 g/m2
<b>Maintenance</b>	Machine washable at 30 degrees. Do not twist or wring. Do not steam iron. Iron on reverse only. 
<b>Finishing</b>	Soil-resistant, mould resistant, oil and water-repellent with Teflon Finish.
<b>UK FR Classification</b>	BS5852:1979 Part 1 Pass, BS EN 1021-1-2:2006 Pass
<b>USA FR Classification</b>	NFPA 701-10 Pass, NFPA 260/UFAC Class 1
<b>Europe FR Classification</b>	EN 13773 Class 1
<b>French FR Classification</b>	NF P 92-503 504 505 (M1)
<b>Italian FR Classification</b>	UNI 9177 Classe Uno
<b>Country of Origin</b>	Italy
<b>Commodity Code</b>	55121910

**Inquire for custom projects** No minimum order on standard wallpaper, vinyl, linen, cotton or Trevira.

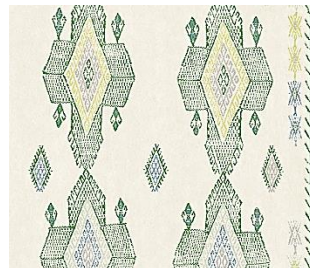
**Custom lead time** 2-3 weeks sampling, 4-8 weeks production from receipt of 50% deposit.

**Inquire for contract projects** 40 Metre minimums for Performance Polyester FR, 100 Metre minimums for ASTM Vinyl.

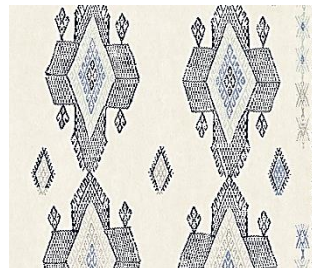
**Contract lead time** 6-8 weeks sampling, 8-10 weeks production from receipt of 50% deposit and confirmed order.



LATTE



PRATO



AZZURRO



ARANCIO

*Travelling Light Performance Print Technical Sheet*

**Custom Submittal Form**

We thrive on creative conversations and love to be challenged, this combined with our intimate knowledge of colour, printing and weaving allows us to tackle almost any customisation project. With simple instruction on colour we can adapt the palette of a design to match any interior scheme.

**Colours**

We can easily alter the colours of our prints to adapt them for a particular scheme. We require guidance on colour from any source, such as fabric cutting, pantone or paint swatch references.

**Base Qualities**

We can alter the composition of our fabrics to make them more suitable for a given use. Whether we are printing onto a more durable ground for upholstery, Trevira or vinyl for flame retardancy, polyester for outdoor use, we apply the same care and attention.



**Travelling Light Design**

THIS FORM MUST BE SUBMITTED WITH HARD COLOUR REFERENCES TO YOUR SHOWROOM WHO WILL PROVIDE A FORMAL QUOTE BASED ON INFORMATION PROVIDED.

● *Colour 1*

-----  
● *Colour 2*

-----  
● *Colour 3*

-----  
● *Colour 4*

-----  
● *Colour 5*

-----  
● *Colour 6*

**Ground Colour**

Print to standard

Client to submit

*Travelling Light Performance Print Technical Sheet*

*Design Notes (scale change / motif adjustments)* -----

*Quantity Required* -----

*Ground Options (please tick box that applies)*

<input type="checkbox"/>	Non-Woven Wallpaper (White or Ivory)	<input type="checkbox"/>	Raffia Wallpaper (50 M/YD Minimums apply)
<input type="checkbox"/>	Vinyl Wallpaper (Flat or Linen Emboss)	<input type="checkbox"/>	Cotton (several options available)
<input type="checkbox"/>	Trevira Polyester FR (several options available)	<input type="checkbox"/>	Outdoor Performance Polyester FR (40 M/YD Minimums apply)
<input type="checkbox"/>	Light Linen (Ecrú or Natural)	<input type="checkbox"/>	Other - please specify:
<input type="checkbox"/>	Heavy Linen (Ecrú or Natural)		

Custom print on contract vinyl to meet EN 13501 B-s2, d0 + ASTM E84 Class A standards.  
 Custom print on Performance Polyester FR to meet class I anti-flame according to UNI 9176, BI in Germany and MI in France, NFPA 701-10, NFPA 260 and UFAC in Class 1.

**Travelling Light - Full Repeat**

