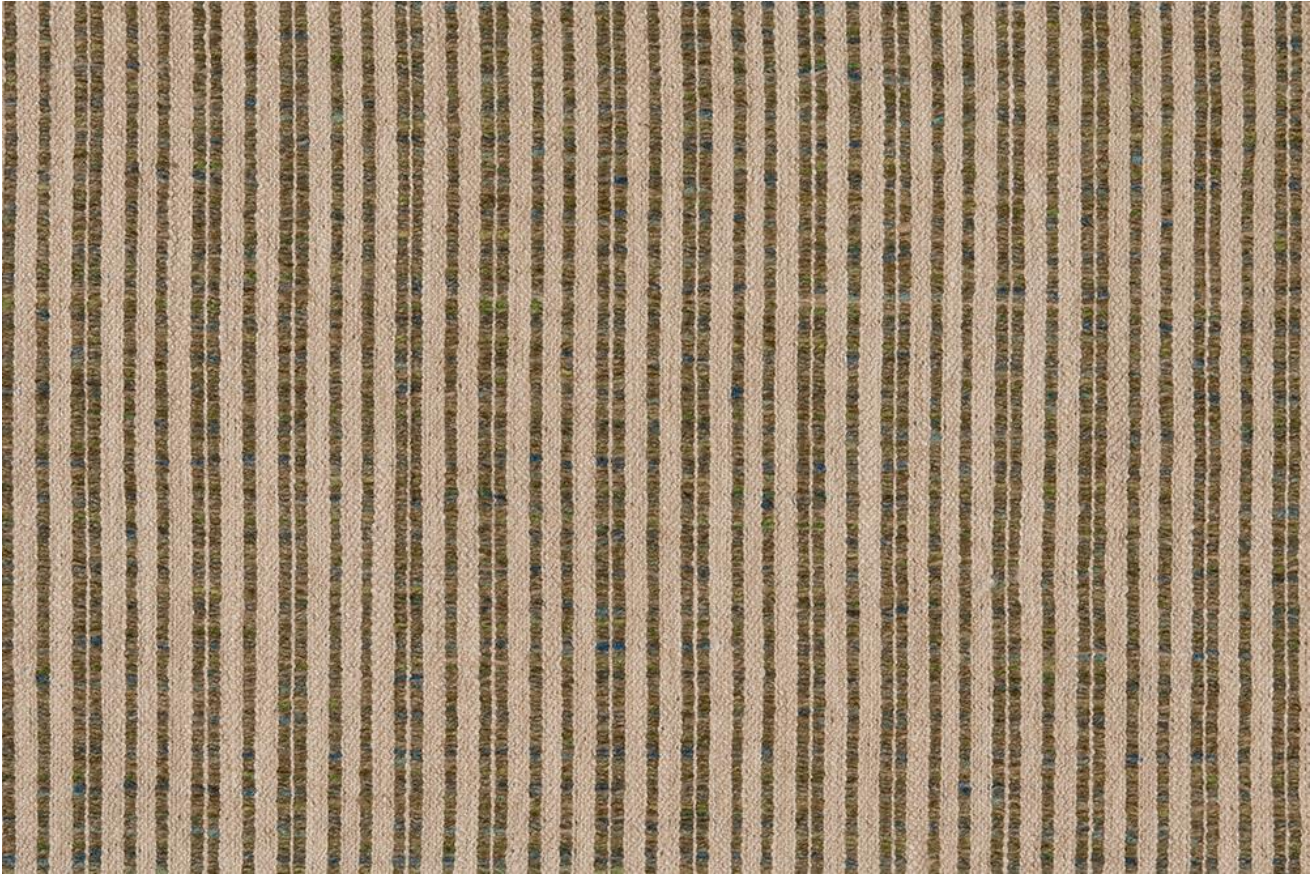



Unravel Technical Sheet



Unravel Olive by And Objects

<b>Composition</b>	34% CV 32% LI 16% PAN 13% CO 4% PES 1% PA
<b>Width</b>	54.3" / 138 CM
<b>Pattern Repeat</b>	Horizontal Repeat 1.7" / 4.5 CM
<b>Martindale</b>	35,000 Rubs
<b>Roll Length</b>	Max size 30M rolls (sold by linear metre)
<b>Weight</b>	763 g/m <sup>2</sup>
<b>Minimum order</b>	1 Metre
<b>FR Rating</b>	Supplied untreated and untested (Our treatment centre recommends the following to pass UK Domestic Upholstery standards or Contract Crib 5: APNTREAT double treatment of FR Backcoating + FR lamination)
<b>Maintenance</b>	
<b>Commodity Code</b>	5309290000
<b>Country of Origin</b>	Belgium