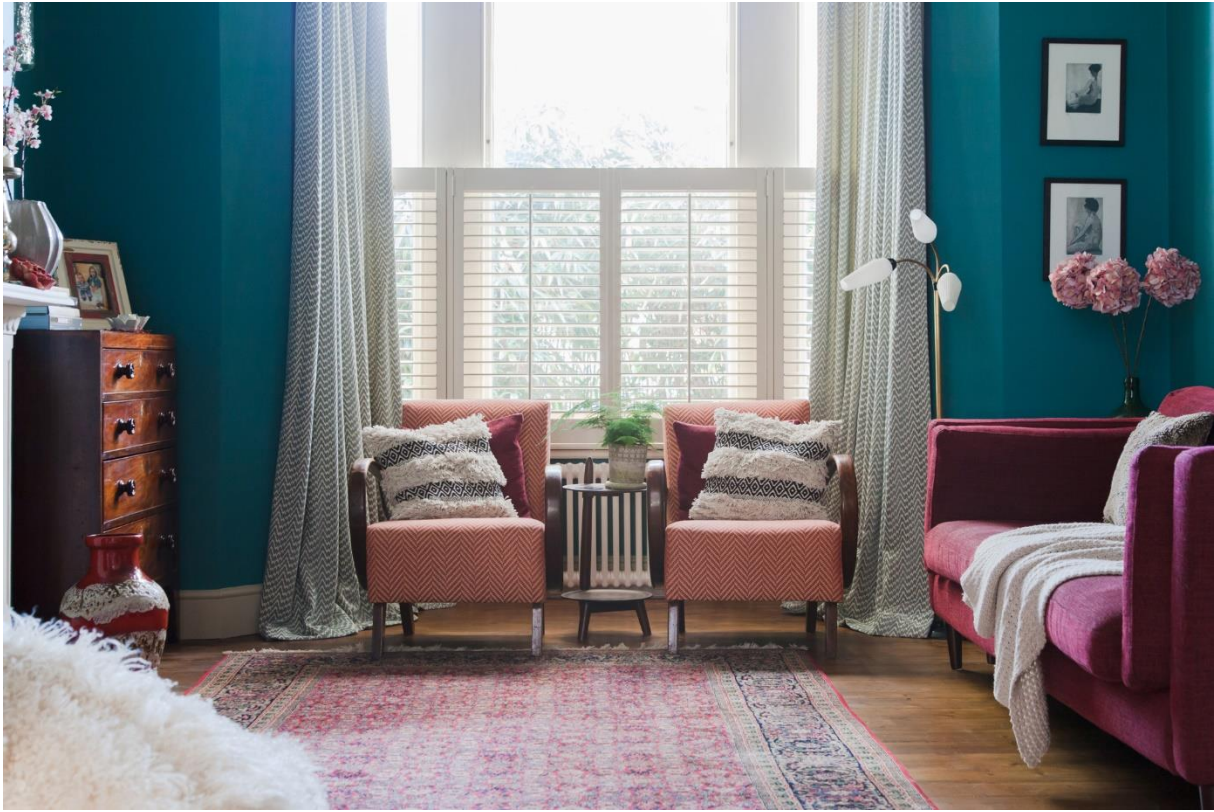



*Zenith Technical Sheet*



*Zenith Sage drapery, Interior Design by Brooke Copp-Barton*

<b>Composition</b>	69% Cotton 31% Viscose
<b>Width</b>	132 CM / 52
<b>Pattern Repeat</b>	Horizontal Repeat 7 CM / 2.8" Vertical Repeat 2.5 CM / 1"
<b>Martindale</b>	20,000 Rubs
<b>Roll Length</b>	Max size 30M rolls (sold by linear metre)
<b>Weight</b>	399 g/m <sup>2</sup>
<b>Minimum order</b>	1 Metre
<b>FR Rating</b>	Supplied untreated and untested (Our treatment centre recommends the following to pass UK Cigarette & Match: DUB Domestic Upholstery)
<b>Maintenance</b>	
<b>Commodity Code</b>	55144900
<b>Country of Origin</b>	Belgium