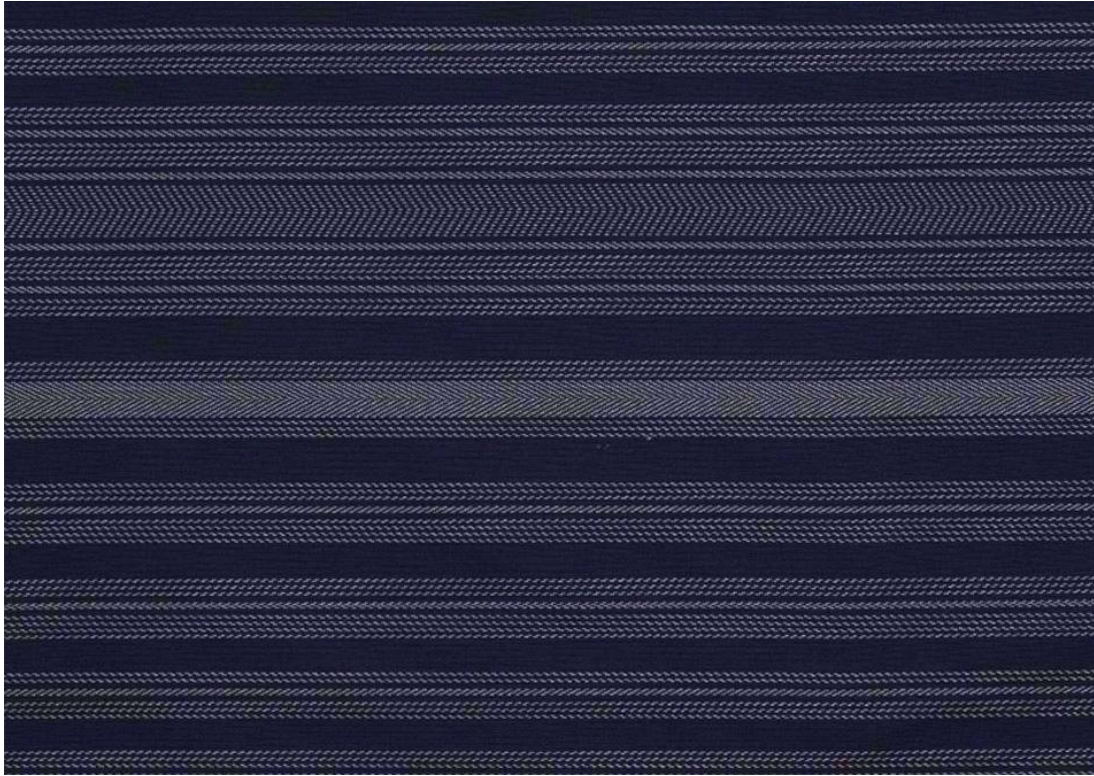



*Saint Tropez Outdoor Technical Sheet*



*Saint Tropez Notte Outdoor Fabric*

<b>Composition</b>	31% Solution Dyed Polypropylene 69% Solution Dyed Polyester
<b>Width</b>	55.1" / 140 CM
<b>Pattern Repeat</b>	Vertical Repeat 18.1" / 46 CM
<b>Martindale</b>	30,000 Rubs
<b>Roll Length</b>	Max size 30M rolls (sold by linear metre)
<b>Minimum order</b>	1 Metre
<b>FR Rating</b>	Supplied untreated and untested (Our treatment centre recommends the following to pass UK Domestic Upholstery standards or Contract Crib 5: APNTREAT double treatment of FR Backcoating + FR lamination)
<b>Maintenance</b>	 40C Mild Wash Do not bleach Use only bleach free detergent Iron at maximum sole plate temp of 110C on reverse only Do not tumble dry, do not twist or wring, do not steam iron
<b>Weight</b>	500 gm2
<b>Commodity Code</b>	55121910
<b>Country of Origin</b>	Italy